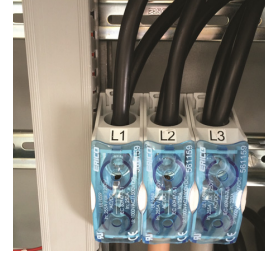
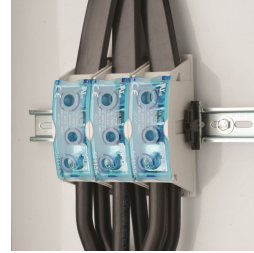
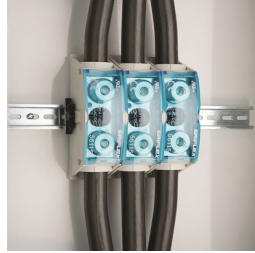
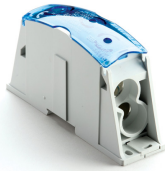
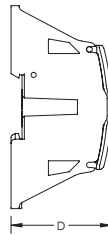
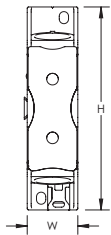


Power Block – SBF2C400AL (561167)



nVent ERIFLEX Power Blocks are the main DIN mounted output/input devices for connection between primary and secondary switchboard, or main input/output connection for machine or industrial equipment (such as inverter, air conditioning machines, etc.). The high short circuit rated large cross section blocks offer time savings and reliability in every panel configuration. The complete Power Blocks range offers multiple connection types with up to four cables, nVent ERIFLEX Flexibar Advanced, or IBS/IBSB Advanced power braids.

- Can be connected with round cross section cable or flat connection system like nVent ERIFLEX Flexibar Advanced or IBS/IBSB Advanced Insulated Braided Conductor
- Compact power block with high short circuit current rating
- Tinned copper or aluminum block allows for copper or aluminum conductor direct connections, or using ferrule
- Screw retaining cover is hinged and removable
- Design allows for visual inspection of conductor and confirmation of connection
- Modular snap-together blocks for building multi-pole power blocks
- Easily clips onto DIN rail or mounts to panel with screws
- Voltage detection and measurement connection
- 95% fill ratio
- Halogen free
- RoHS compliant



Part Number	SBF2C400AL
Article Number	561167
Finish	Tinned
Type	Flexibar-2 Cables
Typical Application Current Rating, UL	335 A
Material	Aluminum Thermoplastic
Line Side Max Conductor Size, UL	100 mm ²
Load Side Max Conductor Size, UL	(2) 250 kcmil
Max Current Rating, Insulated Power Braid, IEC	480 A
Max Current Rating, nVent ERIFLEX Flexibar, IEC	550 A
Max Current Rating, UL/CSA	335 A
Peak Short Circuit Current (I _{pk})	51 kA
Short Circuit Current Rating (SCCR)	100 kA

Part Number	SBF2C400AL
Max Working Voltage, IEC (Ui)	1,000 VAC 1,500 VDC
Max Working Voltage, UL (Vin)	1,000 VAC/DC
Line Side Number of Connections	1
Line Side Insulated Power Braid Cross Section	100 mm ²
Line Side nVent ERIFLEX Flexibar Size	2x20x1 - 5x24x1
Load Side Compact Stranded Wire Size	(2) 35 - 120 mm ²
Load Side Number of Connections	2
Load Side Stranded Wire Size - Ferrule	(2) 35 - 120 mm ²
Load Side Wire Size	(2) #2 - 250 kcmil
Depth (D)	3.23"
Height (H)	5.76"
Width (W)	1.63"
Unit Weight	0.74 lb
Certification Details	UL® 1059
Complies With	IEC® 60947-7-1
Enclosure Rating	IP 20
Flammability Rating	UL® 94V-0
Certifications	CE, ERIFLEX SB cURus RoHS
Standard Packaging Quantity	1 pc
UPC	78285691273
EAN-13	8711893155433

Design Guideline for Distribution Blocks, Power Blocks and Power Terminals										
Derating according to Ambient* Temperature (°F) to maintain working temperature of 185°F										
Ambient Temperature (°F)	86°	95°	104°	113°	122°	131°	140°	149°	158°	167°
Derating Coefficient (d)	1	1	1	0.94	0.88	0.82	0.75	0.67	0.58	0.47
*environment around the terminal blocks inside the enclosure										

SBF250 is UL® 1953 Listed when used with SB250SPCR. Max Working Voltage for UL 1953 applications is 1250 VAC/DC.

IEC is a registered trademark of the International Electrotechnical Commission. UL, UR, cUL, cULus and cURus are registered certification marks of UL LLC.

© 2019 nVent All rights reserved
nVent, nVent CADDY, nVent ERICO, nVent ERIFLEX and nVent LENTON are owned by nVent or its global affiliates.
All other trademarks are the property of their respective owners. nVent reserves the right to change specifications without prior notice.